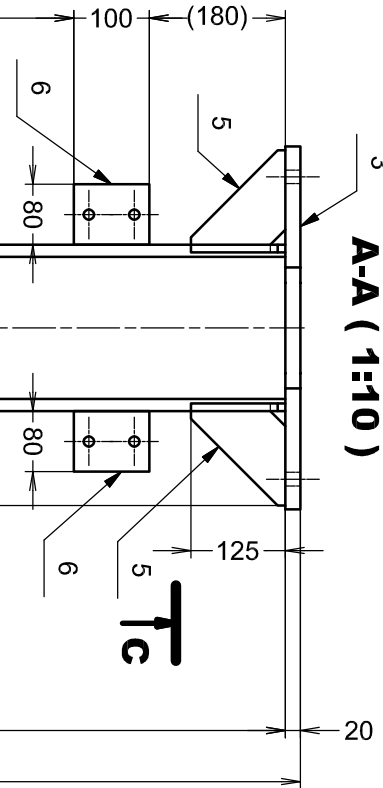


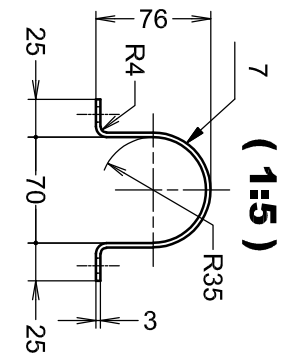
(1:10)

PODPĚRA SVARENEC

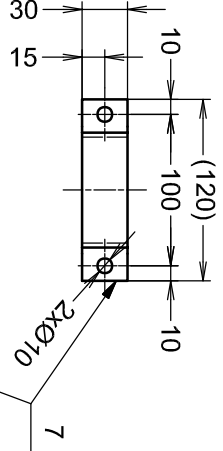
A



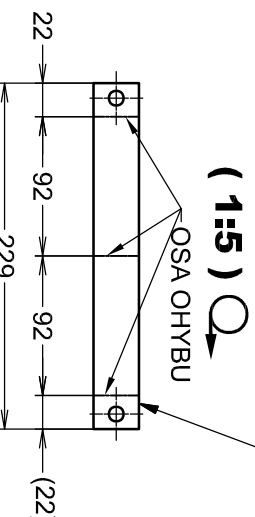
(1:5)



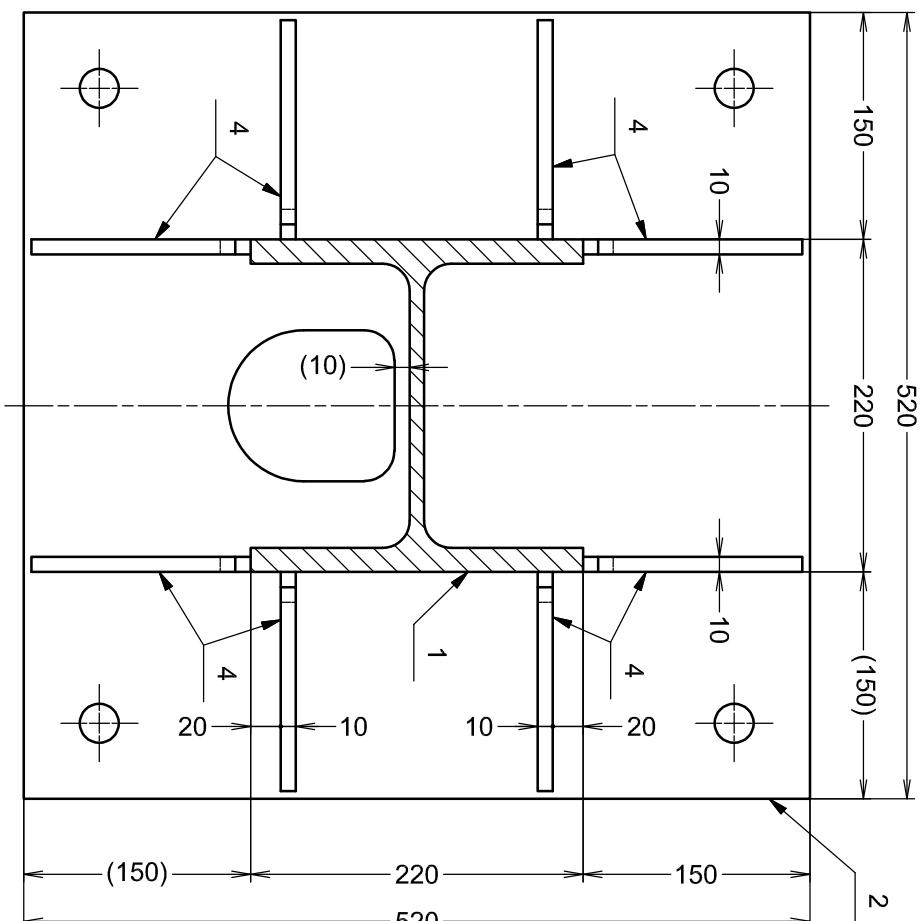
(1:5)



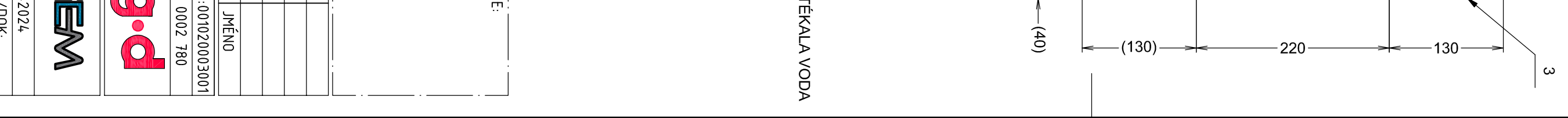
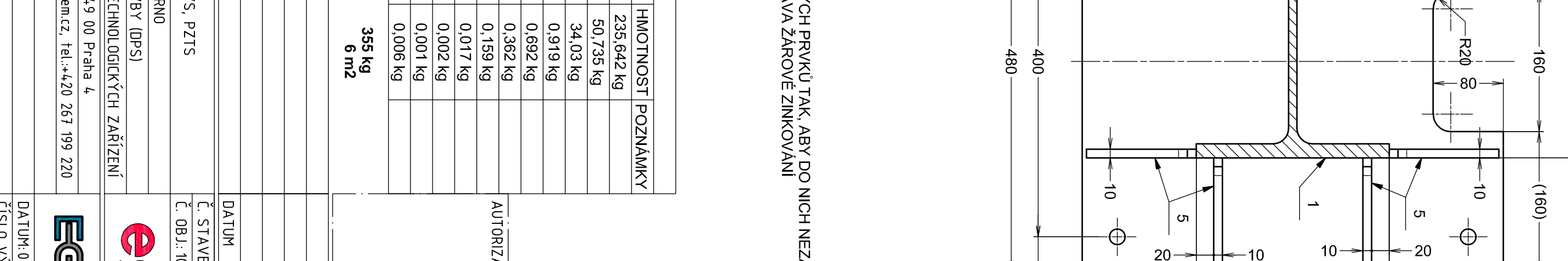
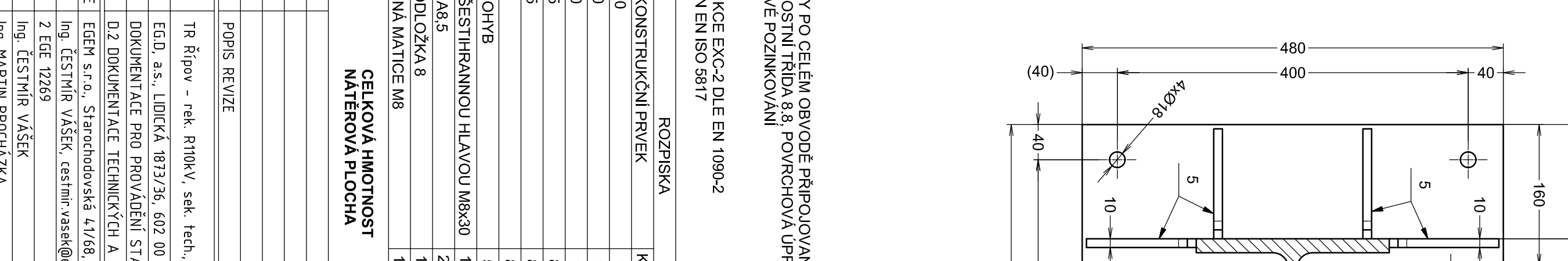
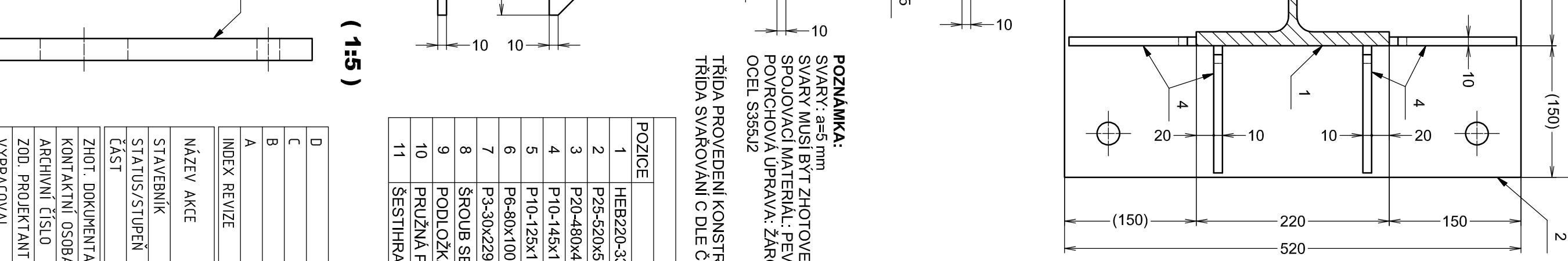
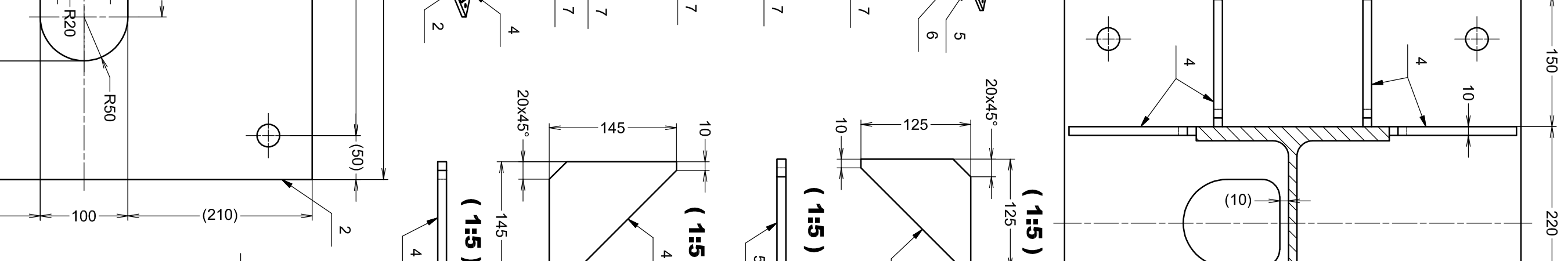
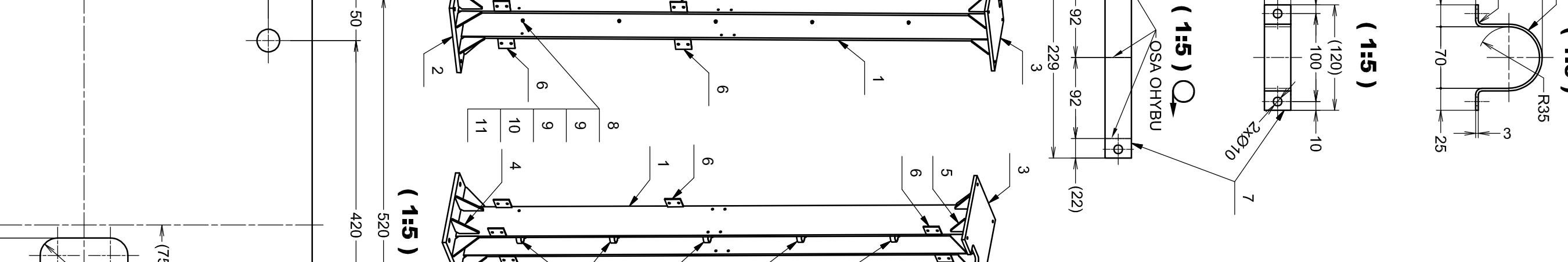
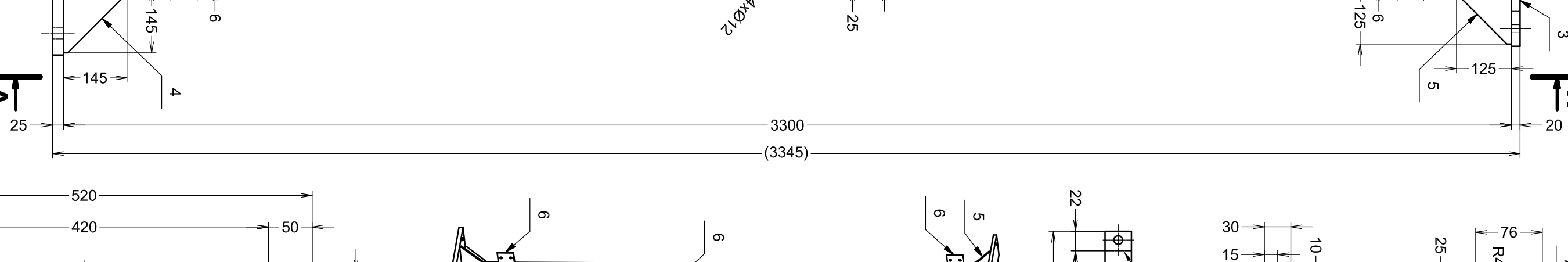
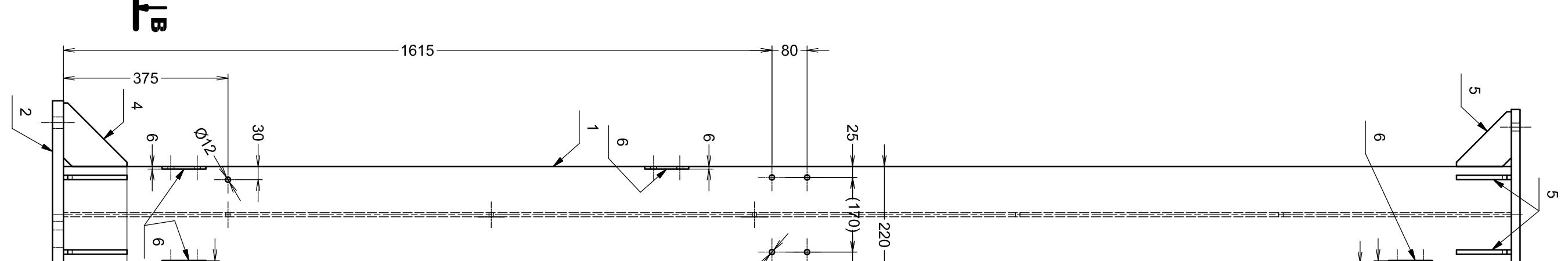
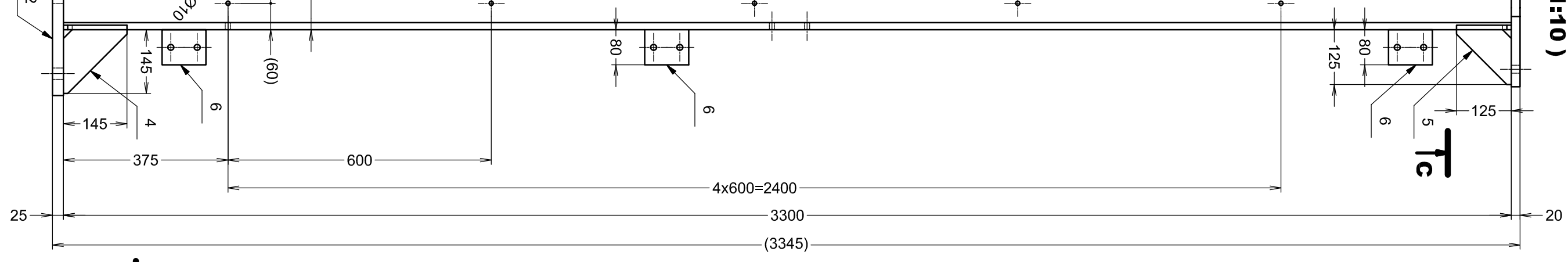
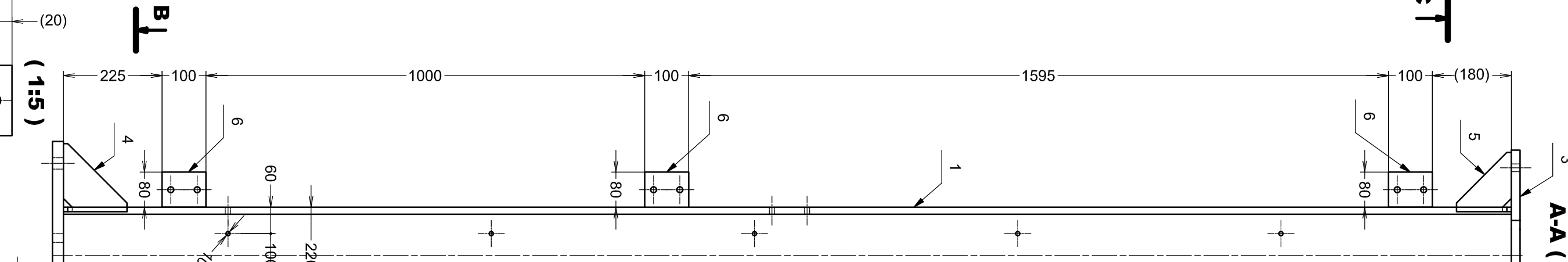
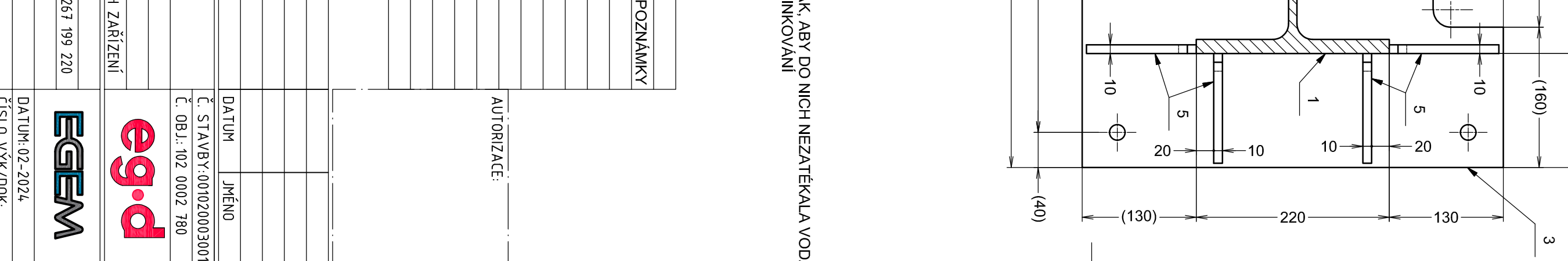
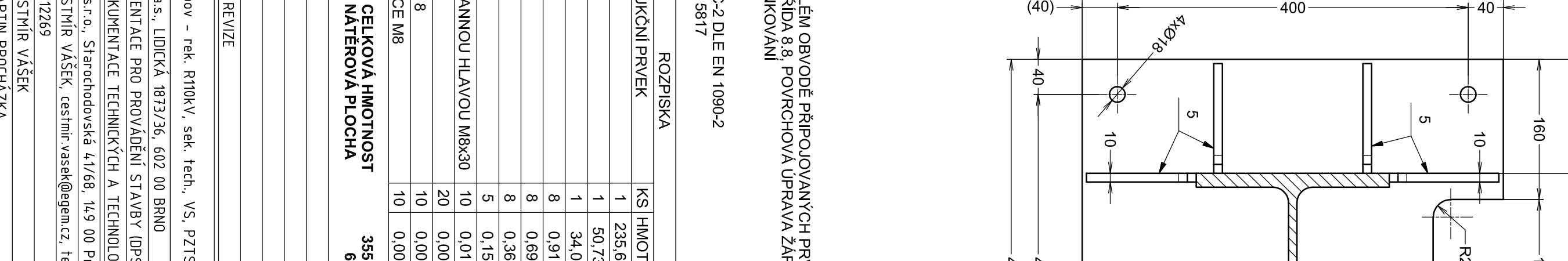
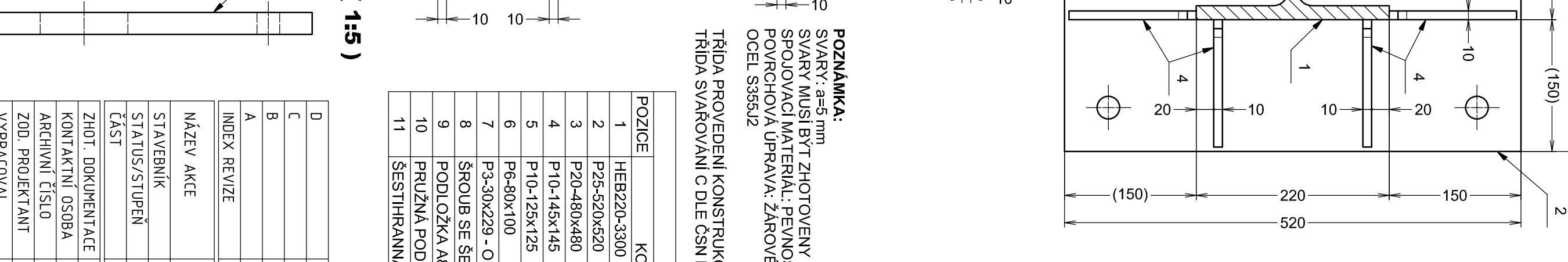
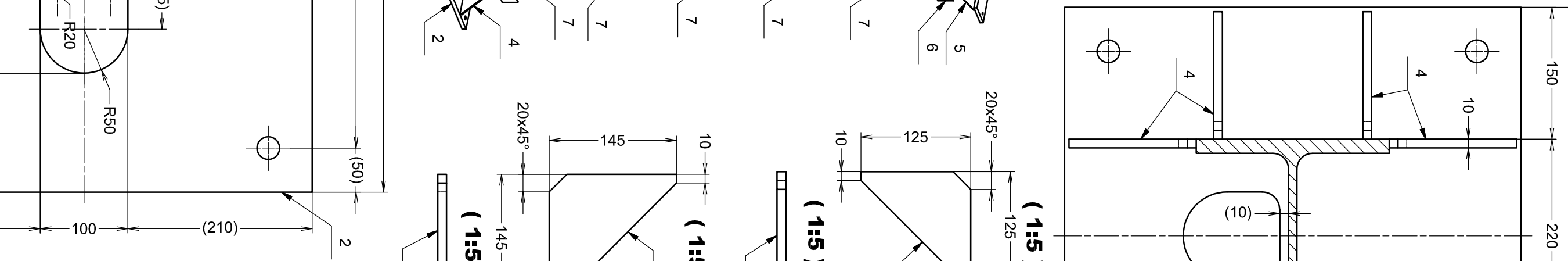
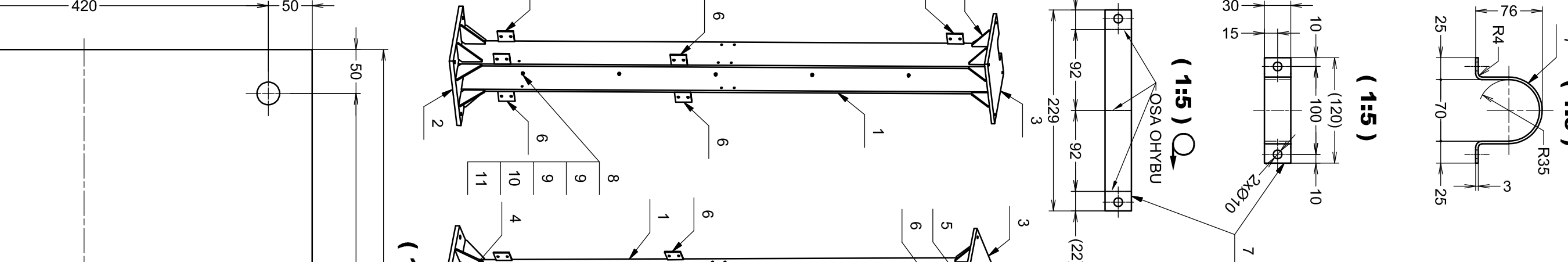
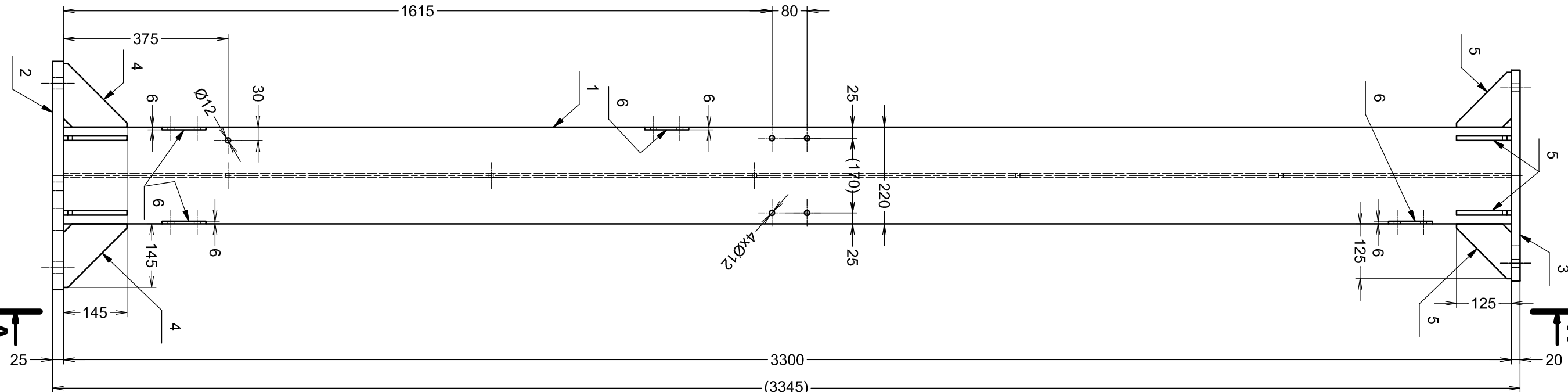
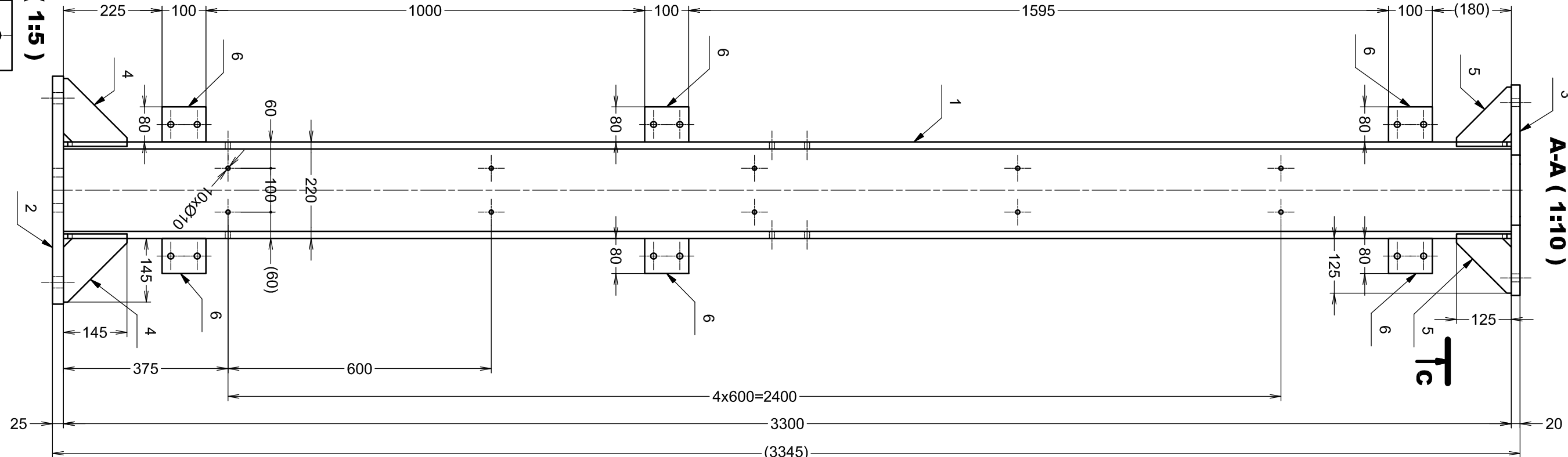
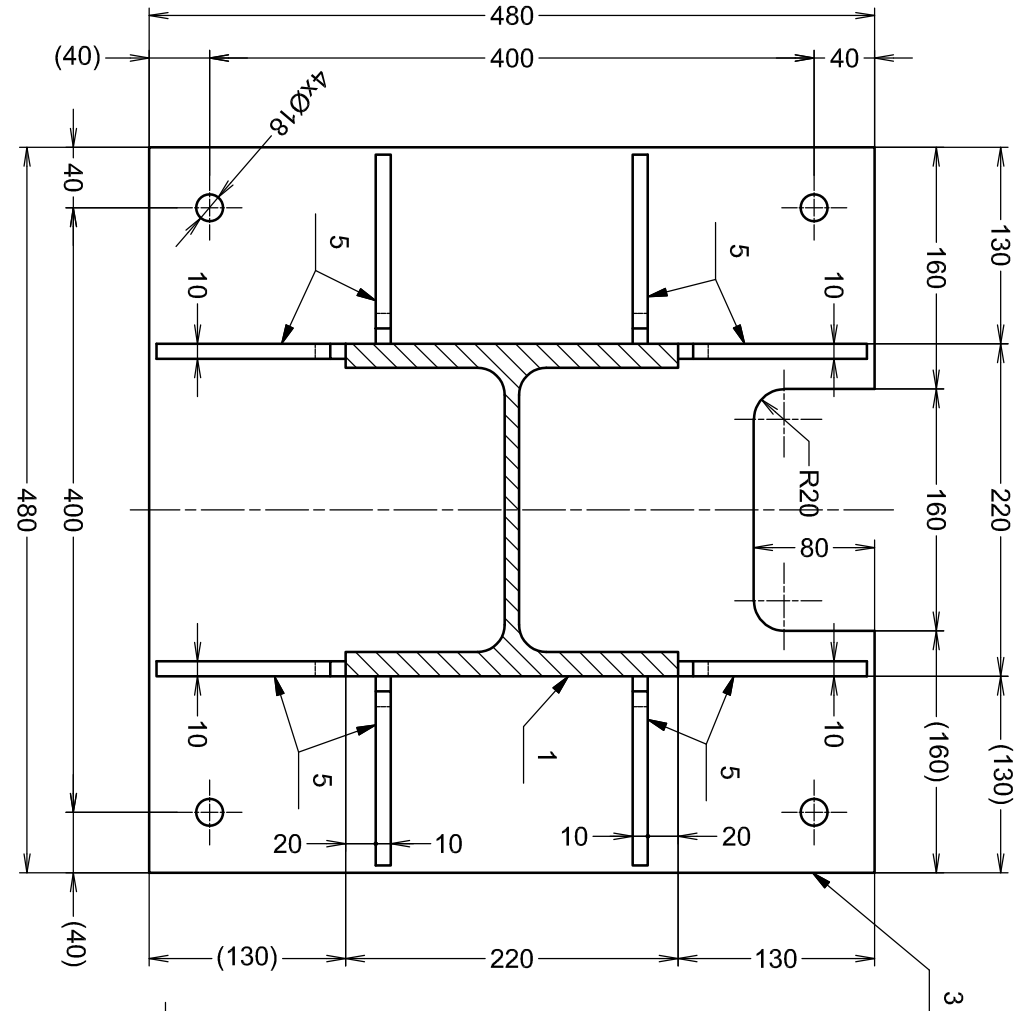
(1:5)



B-B (1:5)

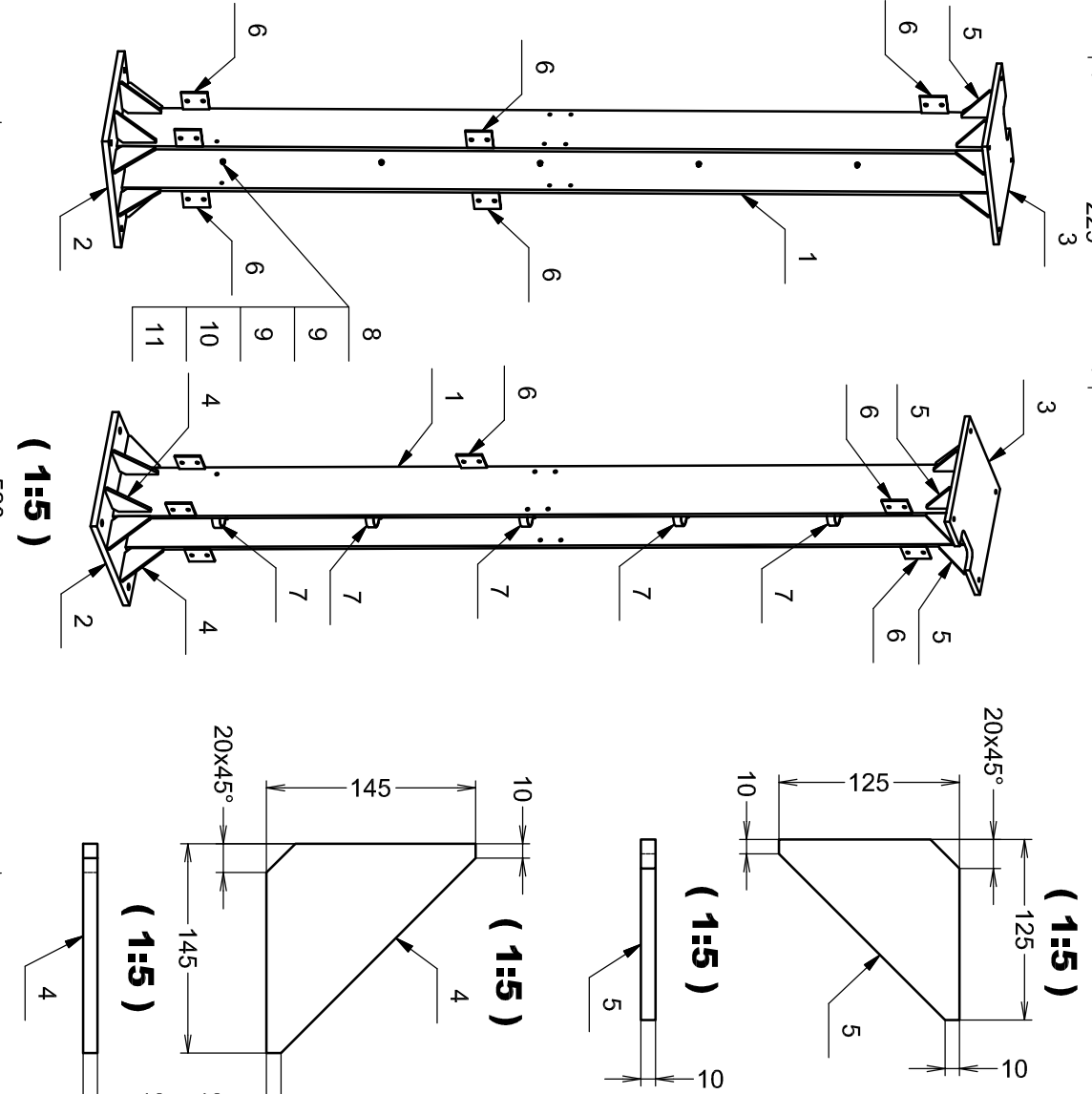


C-C (1:5)



POZNÁMKA:
SVARÝ: a=5 mm
SVARÝ MUSÍ BYT ZHOTOVENÝ PO CELEM OBVODE PŘIPOJOVANÝCH PRVKŮ TAK, ABY DO NICH NEZTĚKALA VODA
SPOJOVACÍ MATERIÁL: PEVNOSTNÍ TŘÍDA 8.8 PОВРCHOVÁ ÚPRAVA: ŽAROVÉ POZINKOVÁNÍ
POVRCHOVÁ ÚPRAVA: ŽAROVÉ POZINKOVÁNÍ
OCEL S355J2

TŘÍDA PROVEDENÍ KONSTRUKCE EXC-2 DLE EN 1090-2
TŘÍDA SVAROVÁNÍ C DLE ČSN EN ISO 5817



POZICE	KONSTRUKČNÍ PRVEK	KS	HMOTNOST	POZNÁMKY
1	HEB220-3300	1	235,642 kg	
2	P25-520x520	1	50,735 kg	
3	P20-480x480	1	34,03 kg	
4	P10-145x145	8	0,919 kg	
5	P10-125x125	8	0,692 kg	
6	P6-80x100	8	0,362 kg	
7	P3-30x229 - OHYB	5	0,159 kg	
8	ŠROUB SE ŠESTIHRANNOU HLAVOU M8x30	10	0,017 kg	
9	PODLOŽKA A8.5	20	0,002 kg	
10	PRUŽNÁ PODLOŽKA 8	10	0,001 kg	
11	ŠESTIHRANNÁ MATICE M8	10	0,006 kg	

CELKOVÁ HMOTNOST
NÁTEROVÁ PLOCHA

355 kg
6 m²

